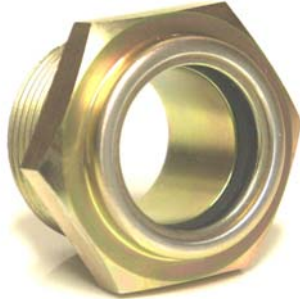


Circular Window Sight Glasses



Compact assemblies that provide reliable level indication at low cost.

The window sight glass is fitted with quality glass and are suitable for elevated temperature and pressurized applications. The glass window is fully seated in a steel body as standard.

- Positive indication when liquid is present
- Flat glass
- Internal metal reflector
- Cushioned against shock

Potter Flow Switch



The model VSR-F is a vane type water flow switch for use on wet sprinkler systems. It is UL listed and FM approved for use on steel pipe.

LPC approved sizes are 2" thru 6"

The unit may also be used as a sectional water flow detector on large systems.

Galv Unions with Brass Orifice Plate



- Sizes 1/2" to 2" BSP
- Orifice Plate Thickness 3mm
- Orifice Size to Customer Requirements

Brass Orifice Plates



- Sizes 50mm to 200mm
- Orifice Size to Customer Requirements
- Identification Tag on Handle