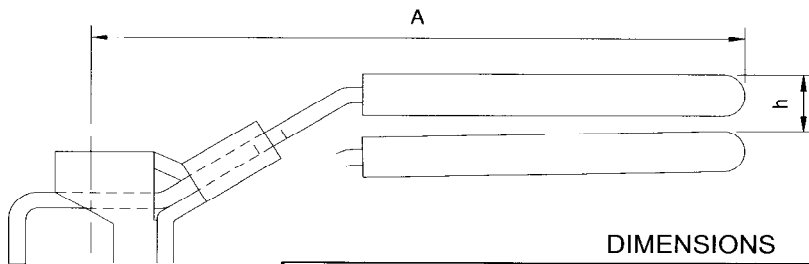
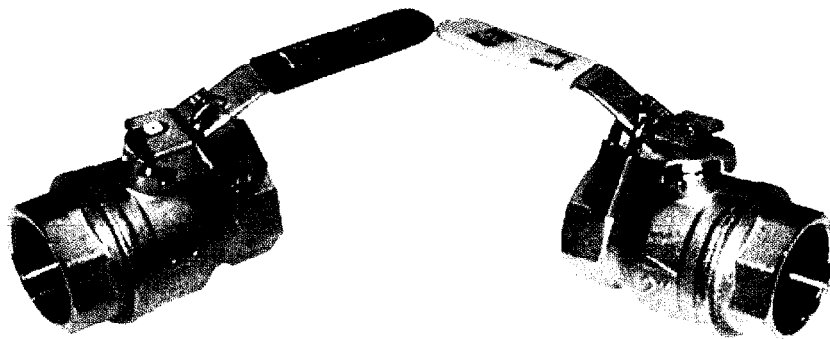


## FIGURES 20, 33, 63, 84GBA, 85 & 90 BALL VALVES



DIMENSIONS

	Lockdev/001	Lockdev/002	Lockdev/003
Full Port Sizes ( inch )	¼ to ½	¾ & 1	1¼ to 2
Reduced Port Sizes ( inch )	½ to ¾	1 & 1¼	1½ to 2
A (mm )	96	117	156
h (mm)	8.5	9.5	4

Dimension 'A' shows the handle length from the centre of the stem;  
Dimension 'h' shows the height of the handle compared to the standard handle supplied with the valves. The full port & reduced port lines in the chart shows the sizes of valves which each size locking handle will fit.

The handle is Dacrotized steel for superior corrosion resistance and is fitted with a yellow or blue PVC sleeve.

**NB.** use 7 mm padlock shackle only.